



# Early Childhood Comprehensive Systems: Scaling Effective Early Childhood Systems Development (ECCS SEED)

## Program Overview

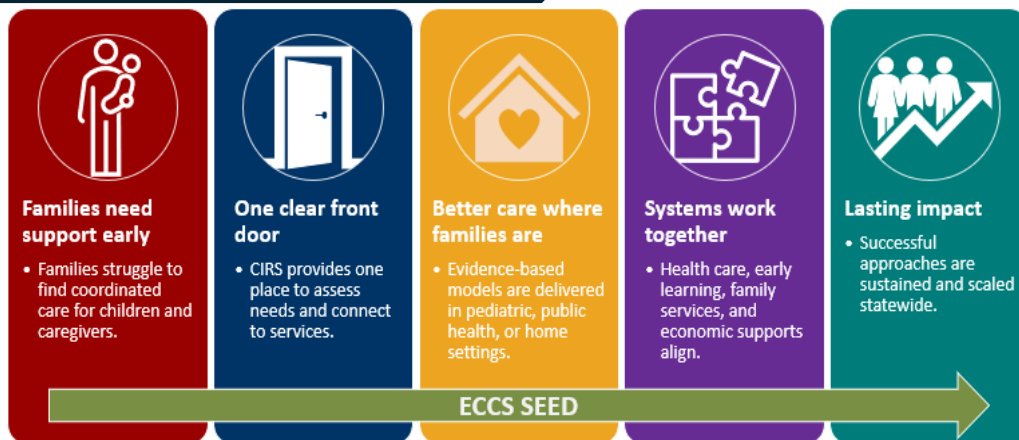
The [Early Childhood Comprehensive Systems: Scaling Effective Early Childhood Systems Development Program \(ECCS SEED\)](#) improves access to **high-quality, coordinated care** for families from pregnancy through age 5 (P-5). The program strengthens **early childhood systems** by identifying family needs early—like mental health support, parenting education, and food and housing assistance—and connecting both children and caregivers to high-quality services. By supporting families during the earliest and most critical years of a child's development, ECCS SEED helps prevent chronic disease and supports lifelong health.

Posting on Grants.gov: [HRSA-26-057](#)

## Core Activities

- Establish or expand **Centralized Intake and Referral Systems (CIRS)** that assess families' needs and connect them to appropriate health and human services
- Implement a community-wide, evidence-based, **early childhood model** to improve well-child visits, developmental screening, parent-child relationships, and child flourishing
- Provide state, Tribe, or territory **early childhood systems leadership**
- Plan for **long-term systems sustainability** from Day 1

## How the Program Works



## Investment Impact

### Funding for this investment will:

- Boost family strengths
- Detect developmental concerns early
- Support child flourishing
- Address root causes of chronic disease

### Concentrated investments offer:

- Greater systems sustainability
- Community-wide services
- Statewide impact
- Stronger systems integration

## Key Funding Facts

Estimated Total Program Funding: \$7,000,000

Award Ceiling: \$875,000

Estimated Number of Awards: 8

Project Period: 5 years (September 30, 2026 – September 29, 2031)

Eligibility: States, Tribes, territories, and eligible domestic entities (statewide or tribal reach highly encouraged)

Limit: One award per state/jurisdiction (Tribal exception)