

## 1.0 FUNDING OPPORTUNITY ANNOUNCEMENT (FOA)

<b>Funding Agency:</b>  U.S. Army Corps of Engineers Alaska District PO Box 6898 JBER AK 99506	<b>Funding Instrument:</b> Cooperative Agreement  <b>Funding Opportunity No.:</b> W911KB-25-2-0006  <b>CFDA No:</b> 12.005  <b>Program Authority:</b> 16 U.S.C. 670 (Sikes Act)
<b>Issue Date:</b> 03 April 2025	<b>Application Due Date:</b> 05 June 2025
<b>Overview:</b> Schofield Barracks Vegetation Management and Berm Maintenance, Range Division Hawaii, Integrated Training Area Management Support, Oahu, Hawaii - The Integrated Training Area Management Program requires vegetation management and berm maintenance on the Island of Oahu at Schofield Barracks, South Range, East Range, Kahuku Training Area, Dillingham Training Area, and Kawaihoa. Management consists of maintaining grass to specified heights for environmental and physical safety to include encroaching shrubs and trees and the management of grass, shrubs, and trees along roadsides. Vegetation management also includes revegetating bare ground areas to establish viable ground cover. Berm maintenance consists of building and rebuilding berms within the live fire range lands. See full Funding Opportunity Description in Section I.	
<b>Estimated Total Funding:</b> \$8,492,153.96	<b>Estimated Number of Awards:</b> 1
<b>Contents of Full Text Announcement</b>	
I. Funding Opportunity Description	V. Application Review Information
II. Award Information	VI. Award Administration Information
III. Eligibility Information	VII. Agency Contacts
IV. Application Information	VIII. Other Information
<p><b>Contact Information:</b> Questions relating to Grants.gov including the registration process and system requirements should be directed to the Grants.gov Contact Center at 1-800-518-4726. For assistance with the requirements of this Funding Opportunity Announcement, please contact the Grants Specialist, <a href="mailto:pamela.iverson@usace.army.mil">pamela.iverson@usace.army.mil</a>.</p> <p><b>Instructions to Applicants:</b> The complete Funding Opportunity Announcement, application forms, and instructions are available for download at Grants.gov.</p> <p>Applications in response to this Funding Opportunity Announcement shall be submitted by the application due date. Applications may be submitted electronically via email or through Grants.gov.</p> <p>Applicants shall have a Unique Entity Identification (UEI) number, registration with the System of Award Management (SAM), and registration with Grants.gov, if submitting application through Grants.gov.</p> <p>See Section IV of the Funding Opportunity Announcement for complete application submission information.</p>	

## **Section I: Funding Opportunity Description**

### **Schofield Barracks Vegetation Management and Berm Maintenance Range Division Hawaii, Integrated Training Area Management Oahu, Hawaii**

**27 March 2025**

**Project Ceiling: \$1,629,061.46**

#### **1.0 INTRODUCTION**

The purpose of this Statement of Work (SOW) is to provide details of work to be performed by a Recipient in support of the Range Division Hawaii (RDH) Integrated Training Area Management (ITAM) Program through a cooperative agreement (CA) administered by the U.S. Army Corps of Engineers -Alaska District (USACE) to implement goals and objectives established by the United States Army Garrison Hawaii (USAG HI) Integrated Natural Resources Management Plan (INRMP).

Tasks provided for execution under this CA by USACE do not include any functions to be performed that are inherently governmental. This determination is made with the assessment that places emphasis on the degree to which conditions and facts restrict the discretionary authority, decision-making responsibility, or accountability of Government officials using Recipient services or work products.

#### **2.0 BACKGROUND**

RDH is responsible for visioning, planning, program management, and continuance of Range and Training Area capabilities for the Army in Hawaii ensuring that the training resources are managed in a coherent, integrated, and sustainable manner. Range Division develops programs, implements, and manages a comprehensive range complex sustainment and modernization plan that ensures adequate training infrastructure supporting the operating forces, formal schools, and command's current and future requirements for the installation, to ensure attainment and maintenance of unit combat readiness levels, and successful completion of programs of instruction.

The ITAM Program is a function of RDH and is a core component of the Army Sustainable Range Program (SRP). Per Army Regulation (AR) 350-19, the ITAM program is responsible for maintaining training lands and resources to help the Army meet its training requirements providing land management capability across the total Army. The ITAM Program consists of five major components: (1) Training Requirements Integration (TRI), (2) Sustainable Range Awareness (SRA), (3) Land Rehabilitation and Maintenance (LRAM), (4) Range and Training Land Assessment (RTLTA), and (5) Geographic Information Systems (GIS). The ITAM Program is an essential part of the Army's commitment to continued mission training and establishes a systematic framework for decision making and management of Army training lands allowing the Army to manage its land in an environmentally sound manner to ensure no net loss of training lands for accomplishing primary activities or for impacting the overall training capability.

#### **2.1 Objective**

The ITAM Program requires vegetation management and berm maintenance on the Island of Oahu at Schofield Barracks (SB), South Range (SR), East Range (ER), Kahuku Training Area (KTA), Dillingham Training Area (DTA), and Kawaihoa (KAW) on live fire ranges and training lands, drop zones, and roadsides/firebreaks. Management consists of maintaining grass to specified heights for environmental and physical safety to include encroaching shrubs and trees

and the management of grass, shrubs, and trees along roadsides. Vegetation management also includes revegetating bare ground areas to establish viable ground cover. Berm maintenance consists of building and rebuilding berms within the live fire range lands.

### **3.0 MAJOR TASKS AND REQUIREMENTS**

Recipient purchases, rentals, travel, and services in support of this CA require approval by the onsite Government Representative (GR) prior to acquisition. All field work requires coordination with the onsite GR to deconflict with reserved land and training prior to work commencing. This requires a monthly schedule be submitted to the onsite GR at least two (2) weeks prior to the month being scheduled. All Recipient employees are required to have current First Aid and cardiopulmonary resuscitation (CPR) training. All Recipient employees are required to wear orange reflective safety vests and appropriate personal protective equipment (PPE) while working.

The Recipient shall provide the necessary resources (except for those identified in Section 6.0 Government Furnished Property (GFP) to support the following tasks.

#### **3.1 Vegetation Management**

Cyclical vegetation management is required for grass, brush, and trees to include encroaching vegetation at the following locations (see Appendix A for detailed location and acreage information):

- SB/SR: approximately 975.4 acres on live fire range land and 36.3 miles along roadsides/firebreaks.
- ER: approximately 100 acres on open grassland and 19.2 miles along roadsides.
- KAW: approximately 23.6 miles along roadsides.
- DMR: approximately 16.6 acres on open grassland and 3.6 miles along firebreaks.
- KTA: approximately 98.7 acres on open grassland and 21.6 miles along roadsides.

**3.1.1** The Recipient shall conduct cyclical vegetation management on live fire range land and drop zones to a uniform height not to exceed one (1) foot including berms and mounds without skips or gaps, taking precautions to prevent scalping, uneven mowing, and rutting by equipment. Access to ranges is scheduled for one (1) week per month during the range maintenance week.

**3.1.2** The Recipient shall conduct cyclical vegetation management along roadsides and firebreaks to a uniform height not to exceed two (2) feet including berms and mounds without skips or gaps, taking precautions to prevent scalping, uneven mowing, and rutting by equipment. Vegetation maintenance shall extend up to four (4) feet off of the road/firebreak where topography and safety allow.

**3.1.3** The Recipient shall cut woody vegetation that is encroaching vegetation management areas flush to the ground to include chipping and spreading chipped debris no thicker than three inches.

**3.1.4** The Recipient shall report all damaged grounds to the onsite GR utilizing the ITAM Site Identification forms located in Appendix D. Damaged grounds consists of rutting, excessive soil compaction, scalped areas, excessive wear from use and weather, rock and ground slides, flooding, vegetative damage, and other damage that may have occurred that has the potential to damage equipment.

**3.1.5** The Recipient may use glyphosate herbicides. Locations proposed by the Recipient for herbicide use require review and approval by the onsite GR prior to application. The Recipient shall abide by all local, state, and federal laws pertaining to herbicide application, handling,

licensing, storage, transportation, and record keeping. The Recipient shall supply all herbicide required for this task.

### **3.2 Revegetation**

**3.2.1** The Recipient is required to revegetate approximately 30 acres of bare ground on the Ranges located at Schofield Barracks.

**3.2.2** The Recipient shall till the site to break up clay and hardpan, haul soil from stockpiled areas on the range to the site, spread the soil to match the surrounding topography, compact, and hydroseed the area with flexible growth medium (FGM), approved seed (Rye-Bermudagrass blend), and controlled release fertilizers.

**3.2.3** Subsequent watering is required to ensure successful grass establishment.

**3.2.4** The Recipient shall furnish a tiller, FGM, seed, and fertilizers.

### **3.3 Berm Maintenance**

**3.3.1** The Recipient is required to maintain 908 berms located on live fire ranges at Schofield Barracks (locations are identified in Appendix B). Approximately 120 berms will require rebuilding annually and the remainder of the berms may require light maintenance including reshaping and hydroseeding.

**3.3.2** Berms are approximately one (1) meter in height, two (2) meters wide, and two (2) meters long. Maintenance includes transporting soil from various locations on the ranges, reshaping berms with the additional soil, and hydroseeding with flexible growth medium (FGM), approved seed (Rye-Bermudagrass blend), and controlled release fertilizers.

**3.3.3** Subsequent watering is required to ensure successful grass establishment.

**3.3.4** Herbicide application is required behind berms around targets and control boxes. This requires utilizing backpack sprayers to minimize overspray.

**3.3.5** The Recipient shall furnish all FGM, seed, fertilizers, and herbicide.

**3.3.6** Access to Range berms is scheduled for one (1) week per month.

## **4.0 REPORTS AND DELIVERABLES**

The Recipient shall provide the following documents for review and approval to the onsite GR prior as outlined in the table below:

- Government Furnished Equipment (GFE) Maintenance Plan
- Safety Plan
- Deliberate Risk Assessment utilizing DD Form 2977
- Travel Plan/Itinerary

All Recipient employees must complete the following online (online resources shall be provided by the onsite GR):

- AT Level I awareness
- OPSEC Level I training
- iWatch training

**Monthly Status Report (MSR).** The Recipient shall submit its first monthly status report (MSR) no later than NLT) the 18th of the month after the first full month of the agreement performance. Subsequent reports shall be submitted on the 18<sup>th</sup> of every month until all efforts are completed.

**Herbicide Use Log.** The Recipient shall submit the herbicide use log by the 18<sup>th</sup> of every month conforming to all regulations for herbicide reporting.

The Government shall review all reports and provide comments within ten (10) calendar days. Government comments shall be incorporated, and a revised report shall be provided within ten (10) calendar days after receiving Government comments.

Deliverable	Transmittal Form and Quantity	Schedule
GFE Maintenance Plan	E-mail	Within thirty (30) calendar days of award
Safety Plan	E-mail	Within thirty (30) calendar days of award
Deliberate Risk Assessment	E-mail	Within thirty (30) calendar days of award
Travel Plan/Itinerary	E-mail	Two (2) weeks prior to travel
AT Level I awareness	E-mail certificate	Within thirty (30) calendar days after employees report for duty
OPSEC Level I training	E-mail certificate	Within thirty (30) calendar days after employees report for duty
iWatch training	E-mail certificate	Within thirty (30) calendar days after employees report for duty
First Aid/CPR training	E-mail certificate	Prior to commencement of work
Monthly Status Reports	E-mail	NLT the 18 <sup>th</sup> of each month
Herbicide Use Log (5.2)	E-mail	NLT the 18 <sup>th</sup> of each month

## **5.0 PLACE OF PERFORMANCE**

### **5.1 Place of Performance.**

Tasks shall be performed at Government owned facilities on the island of Oahu at SB, SR, ER, KAW, DMR, and KTA (map of Oahu and training area locations are in Appendix C).

### **5.2 Hours of Operations.**

Work under this CA shall be performed during daylight business hours between the hours of 6am through 6pm, Monday through Friday, excluding holidays observed by Range Division Hawaii. Exceptions to these hours may be submitted to the onsite GR for review and approval.

## **6.0 GOVERNMENT FURNISHED PROPERTY (GFP)**

The Government will provide the facilities, utilities, equipment, and materials identified below and described herein as Government Furnished Property (GFP). GFP consists of Government-Furnished Facilities (GFF), Government-Furnished Utilities (GFU), Government-Furnished Equipment (GFE), and Government-Furnished Materials (GFM) placed in the Recipient's custody. The Recipient shall not use GFP for any other purpose than execution of work under this agreement. The Recipient is responsible for all GFP and upon completion of the task the Recipient shall return all GFP to the Government. The Recipient shall be responsible for safeguarding all GFP provided for Recipient use. At the close of each work period, Government facilities, equipment, and materials shall be secured. The Recipient shall not remove GFP without approval from the onsite GR. An initial inventory of GFP will be made jointly by the Recipient and the GR to verify quantities, condition and availability of the equipment offered to the Recipient by the Government. During the joint inventory between the Government and the Recipient all equipment deficiencies will be identified. GFP shall be returned to the Government in the same condition as it was issued with allowances for normal wear and tear. Recipient purchases, rentals, travel, and services in support of this CA require approval by the onsite GR prior to acquisition.

**6.1 GFF.** The Government shall furnish the Recipient with access and use of a shared facility for equipment storage, equipment maintenance and repair, and supply storage to include fuel, oil, herbicide, and other supplies located at Schofield Barracks. The facility is paved and contains a maintenance shop, above ground fuel storage tank and pump, office building, storage building, storage lean to structure, and multiple storage containers. The Recipient shall keep facilities clean and orderly for appearance and safety and comply with all environmental compliance laws and regulations. The Recipient is responsible for Environmental Compliance Officer (ECO) training and functions for the maintenance yard including all compliance related supplies. ECO training is provided by the Government. The yard must be kept locked when no Recipient staff are present.

**6.2 GFU.** The Government shall furnish utilities for the GFP listed in this SOW to include electricity, water, sewage, and refuse collection.

**6.3 GFE.** The Government shall furnish the Recipient with the following GFE for general use for all tasks:

- shop tools and hand tools
- 400 gallon above ground fuel storage tank located in the maintenance yard
- two (2) pintle hitch straight pull trailer
- one (1) Mack Granite twelve (12) cubic yard dump truck with pintle hitch for towing
- one (1) Mack Granite 2,000-gallon water truck for hydroseeding
- two (2) John Deere (JD) 6105E tractors with HX15 cutting decks
- one (1) Cat M318 Wheeled Excavator with forestry cutting attachment

- two (2) JD 1600 Wide Area Mowers
- one (1) JD C997R Zero Turn Mower
- one (1) Vermeer BC 1500 Brush Chipper
- one (1) Epic 800-gallon Hydroseeder
- one (1) CAT 299C Skid Steer Loaders
- one (1) JCB 35D Teletruck
- one (1) 200-gallon tow behind sprayer
- one (1) JD 310SK Backhoe
- one (1) Hyundai HL960 Loader
- one (1) CAT TL1255 Telehandler
- one (1) CAT 305C Midi Excavator
- ten (10) Stihl Weedwhackers

The Recipient will be required to supply all maintenance, repairs, parts, fuel, oil, grease, services, and other requirements to utilize, maintain and repair GFE. Operation of the dump truck requires a Commercial Driver's License (C DL).

If additional equipment is needed due to equipment being down for repairs or was not provided by the Government, then the Recipient is required to procure the required equipment to accomplish the work identified in this SOW.

The Recipient shall furnish all necessary broadband hotspots and computers for the onsite staff to conduct work requirements (reporting, forms, training, etc.).

The Recipient shall report all damage to GFE to the onsite GR within twenty-four (24) hours.

**6.4 GFM.** The Government shall furnish the Recipient with the following GFM for use: hydroseed materials, soil and water. The Recipient shall furnish all herbicide.

**6.5 Key Control.** The Recipient shall develop procedures covering key control that shall be included in the Safety Work Plan. The Recipient shall establish and implement methods of making sure all keys issued to the Recipient by the Government are not lost or misplaced and are not used by unauthorized persons. No keys issued to the Recipient by the Government shall be duplicated. Such procedures shall include turn-in of any issued keys by personnel who no longer require access to locked areas. The Recipient shall report any occurrences of lost or duplicate keys/key cards to the onsite GR within twenty-four (24) hours. In the event keys are lost or duplicated, the Recipient shall, upon direction of the onsite GR, re-key or replace the affected lock or locks.

The Recipient shall prohibit the use of Government issued keys/key cards to any persons other than the Recipient's employees. The Recipient shall prohibit the opening of locked areas by Recipient employees to permit entrance of persons other than Recipient employees engaged in the performance of assigned work in those areas, or personnel authorized entrance by the onsite GR.

## **7.0 HAZARD INFORMATION**

There is no requirement for the Recipient to handle hazardous materials. The Recipient shall accomplish tasks on live firing range land and safety instructions will be provided by the

Government. Work within the Multi-Purpose Range Complex (MPRC) area, identified on maps in Appendix A, will require Government provided training prior to work due to the presence of depleted uranium. Any hazardous material that the Recipient's employees may encounter shall not be handled and shall be reported immediately to the Range Control personnel. Range personnel will determine if work can proceed or must cease. Recipient employees shall attend a safety briefing by the Range Division personnel prior to commencement of work.

A Safety Plan is required that addresses practices and procedures for all work Recipients perform; this includes hazard analysis, personnel protective equipment, accident prevention, and safety practices. A Deliberate Risk Assessment accompanying the Safety Plan is also required utilizing DD Form 2977. The GR will provide the required DD Form 2977.

## **8.0 PERSONNEL**

**8.1 Conduct of Personnel.** If an employee is removed from the job site or dismissed from the premises the Recipient is not relieved of the requirement to provide sufficient personnel to perform the services as required by this SOW. In accordance with (IAW) 18 U.S. Code 1382 and AR 380-49, the authority of the Installation Commander to control and deny an employee entry to all or part of the installation is absolute. The individual concerned has no right to appeal.

**8.2 Recipient Personnel Communication.** All personnel must be able to read, write, speak, and comprehend the English language.

## **9.0 PERIOD OF PERFORMANCE (POP)**

The PoP is 12 months from date of award. This SOW is intended to be a multi-year agreement subject to availability of funds with four (4) additional optional years.

## **10.0 POINTS OF CONTACT (POC)**

The POC for this project is: TBD

Any modifications to CA activities as outlined by this SOW must be coordinated through the Grants Officers Representative (GOR) and approved by the Grants Officer (GO) prior to Recipient implementation. The USACE GO is the only person with the authority to act as agent of the Government under this agreement.

The GOR and POC USACE Project Manager is TBD. CA questions should be addressed to the GO, Michelle Mandel. Correspondence should be addressed as follows:

GOR and POC USACE Project Manager: TBD

Grants Officer:  
Michelle Mandel  
U.S. Army Corps of Engineers  
Contracting Division  
Attn: CEPOA-CT  
P.O. Box 6898  
JBER, AK 99506-0898  
Phone: (907) 753-2502  
Email: michelle.r.mandel@usace.army.mil



**Vegetation Maintenance**  
**Schofield Barracks Military Reservation**  
**PRIORITY 1**

**SCHOFIELD BARRACKS:**

- FIREBREAKS & ROADS ----- 25.4 MILES
- MFS & ASSOCIATED AREAS -- 287.2 ACRES
- BAX & ASSOCIATED AREAS -- 312.0 ACRES
- CRS & ASSOCIATED AREAS -- 113.2 ACRES
- KRS & ASSOCIATED AREAS -- 212.5 ACRES

**SOUTH RANGE:**

- FIREBREAKS & ROADS ----- 10.9 MILES
- QTR2, SKEET RG, & ----- 50.5 ACRES
- INFANTRY DEMO RG

**TOTAL ACREAGE: 975.4 ACRES**  
**TOTAL FIREBREAK/ROAD MILEAGE: 36.3 MILES**

For Official Use Only / Limited Distribution

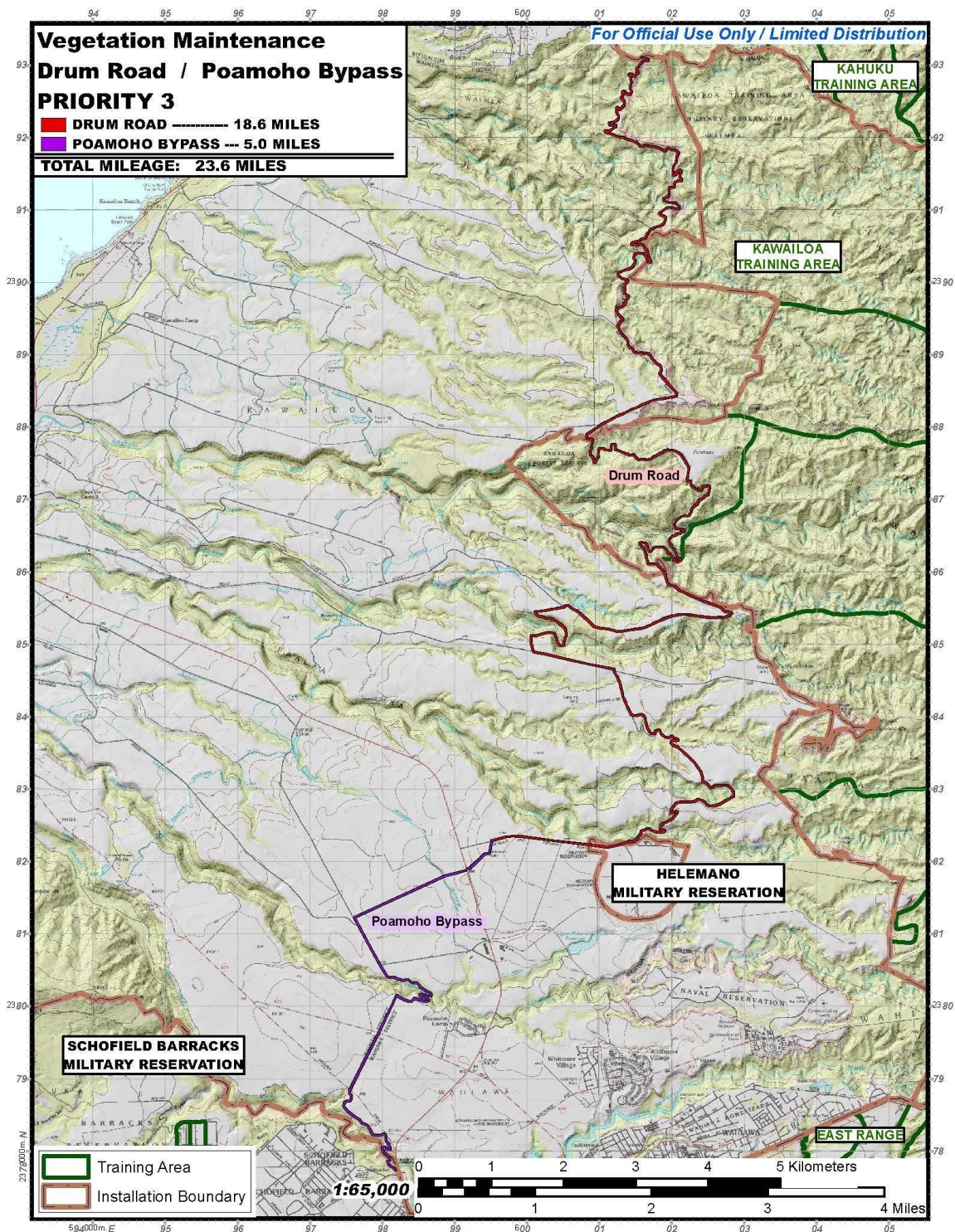
Map labels include: WAIANAE DISTRICT, WAIANAE FOREST RESERVE, SCHOFIELD BARRACKS, SCHOFIELD MILITARY RESERVATION, WAIANAE, LRC, Skeet RG, Infantry Demo RG, QTR-2, Tank, and various area codes like MFs, BAX, CRS, KR, and QTR2.

Scale: 0 to 4 Kilometers, 0 to 3 Miles. Scale: 1:32,000

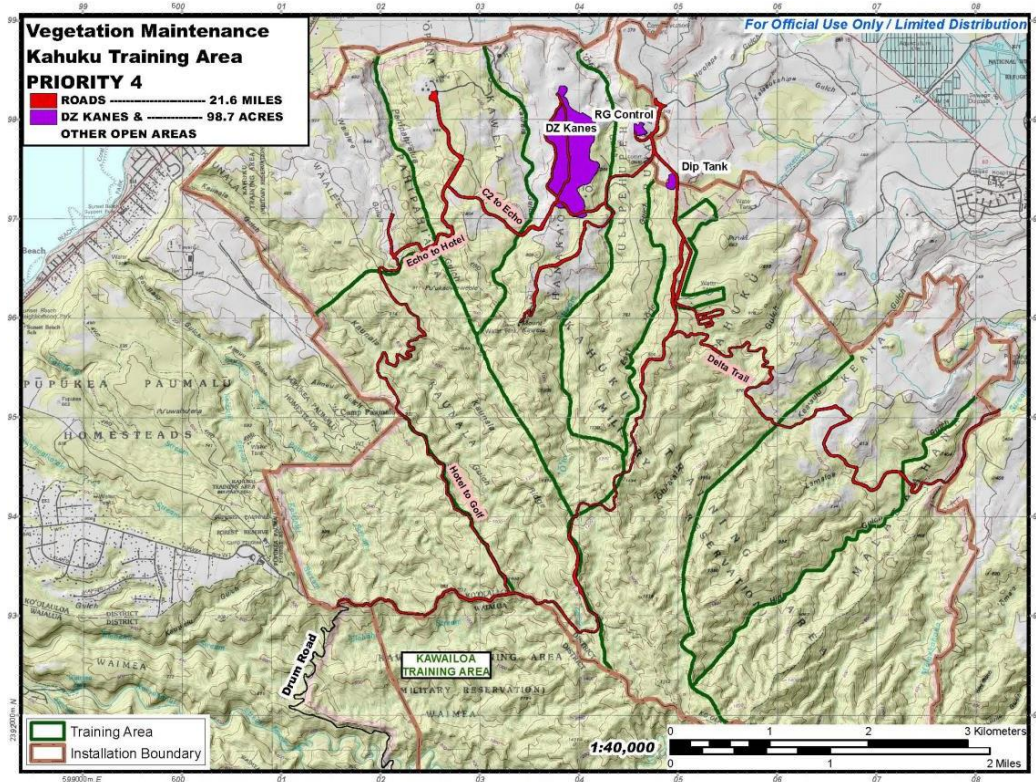
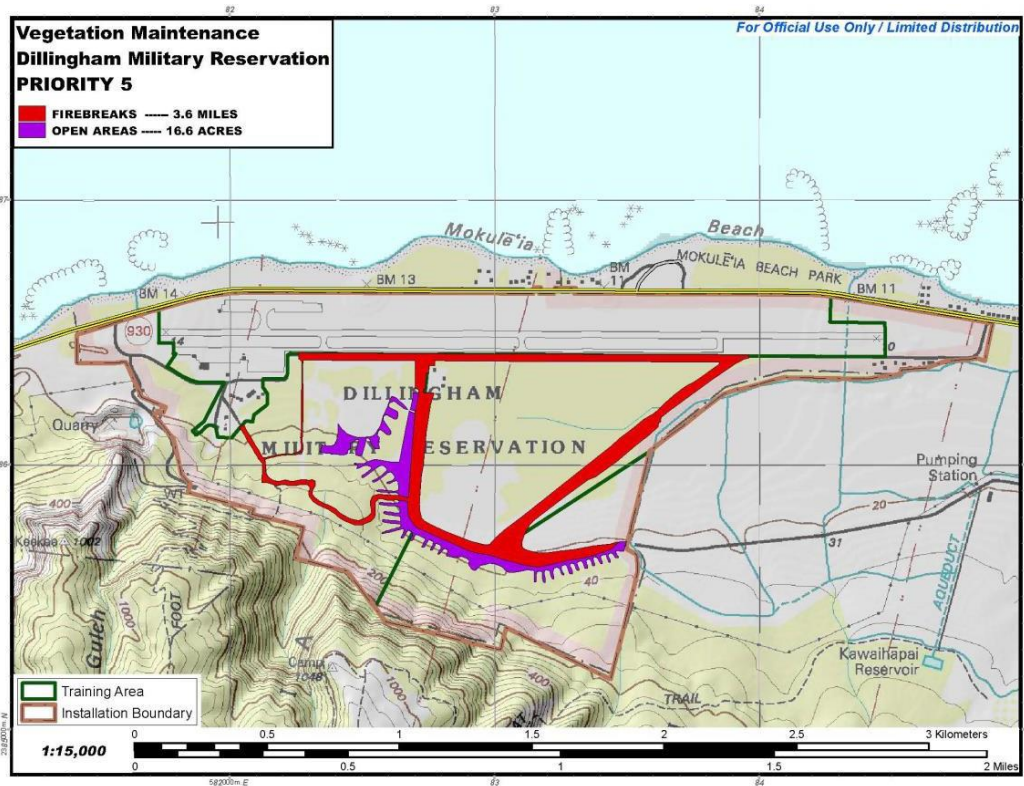
North Arrow: 27°50'00" N





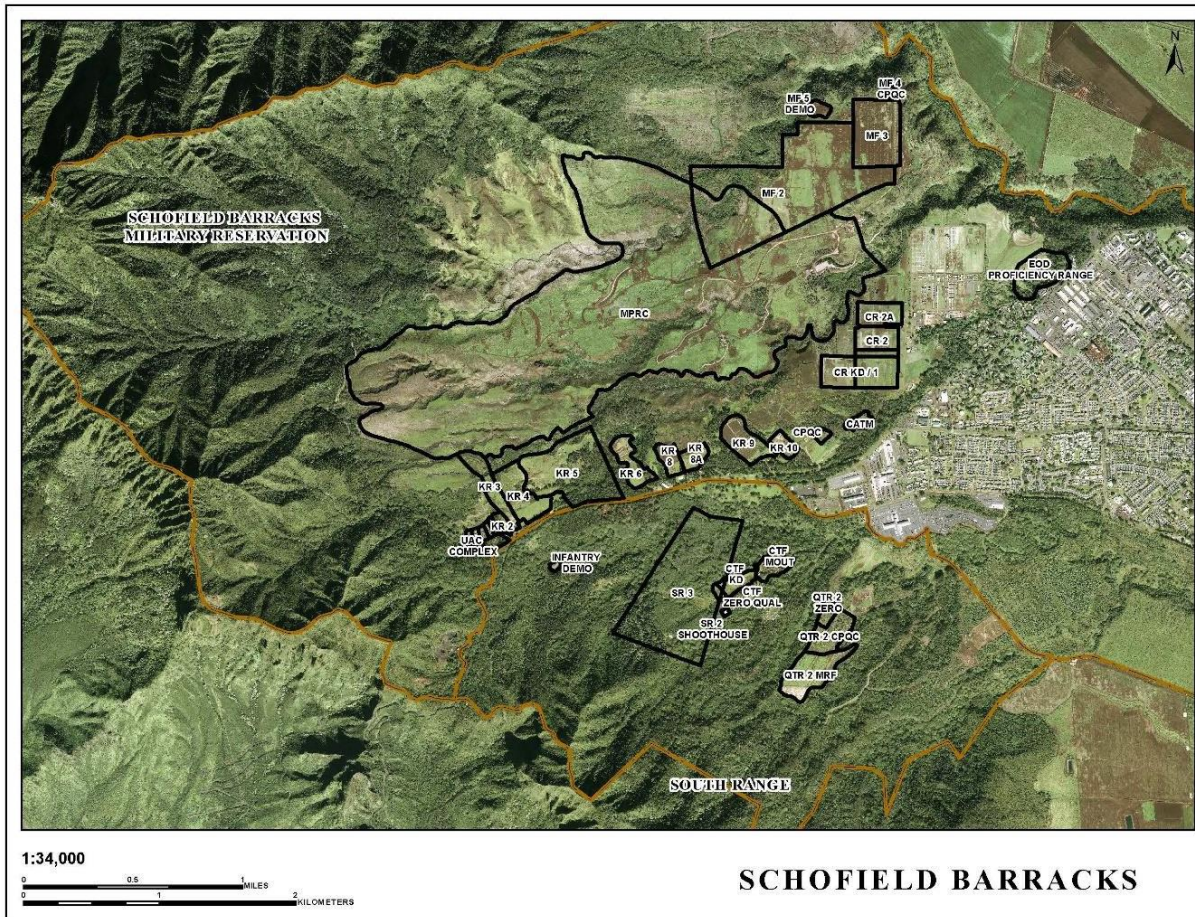








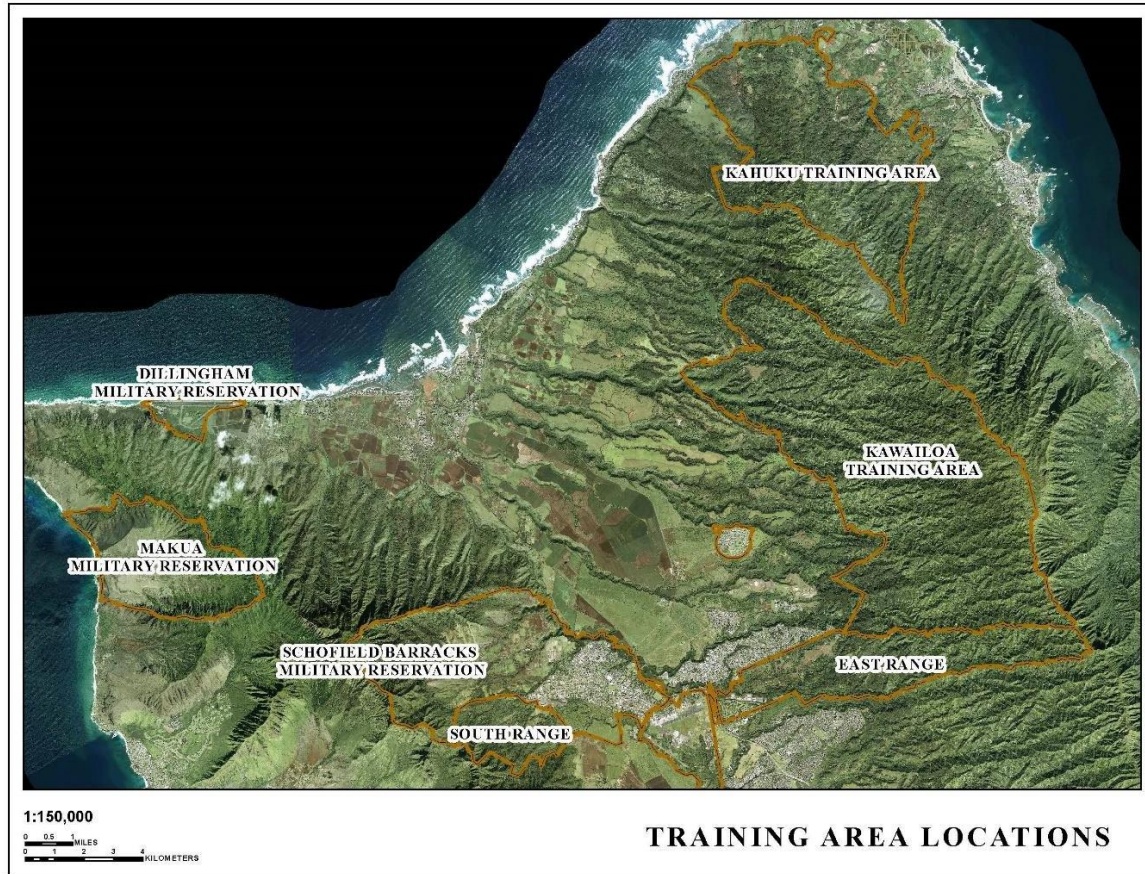
## Appendix B – Berm Maintenance Locations



BERM LOCATION	NUMBER OF BERMS
MPRC	42
MF-2	190
KR-3	30
MF-3	216
QTR-2 MRF	90
MF-4 CPQC	84
QTR-2 CPQC	84
MF-5	4
HALO	1
IN DEMO	6
CR-1 KD	1
UAC GG	10
KR-5	50
KR-6	50
SR-3	50
TOTAL	908



## Appendix C – Place of Performance



## Appendix D – ITAM Site Identification Forms

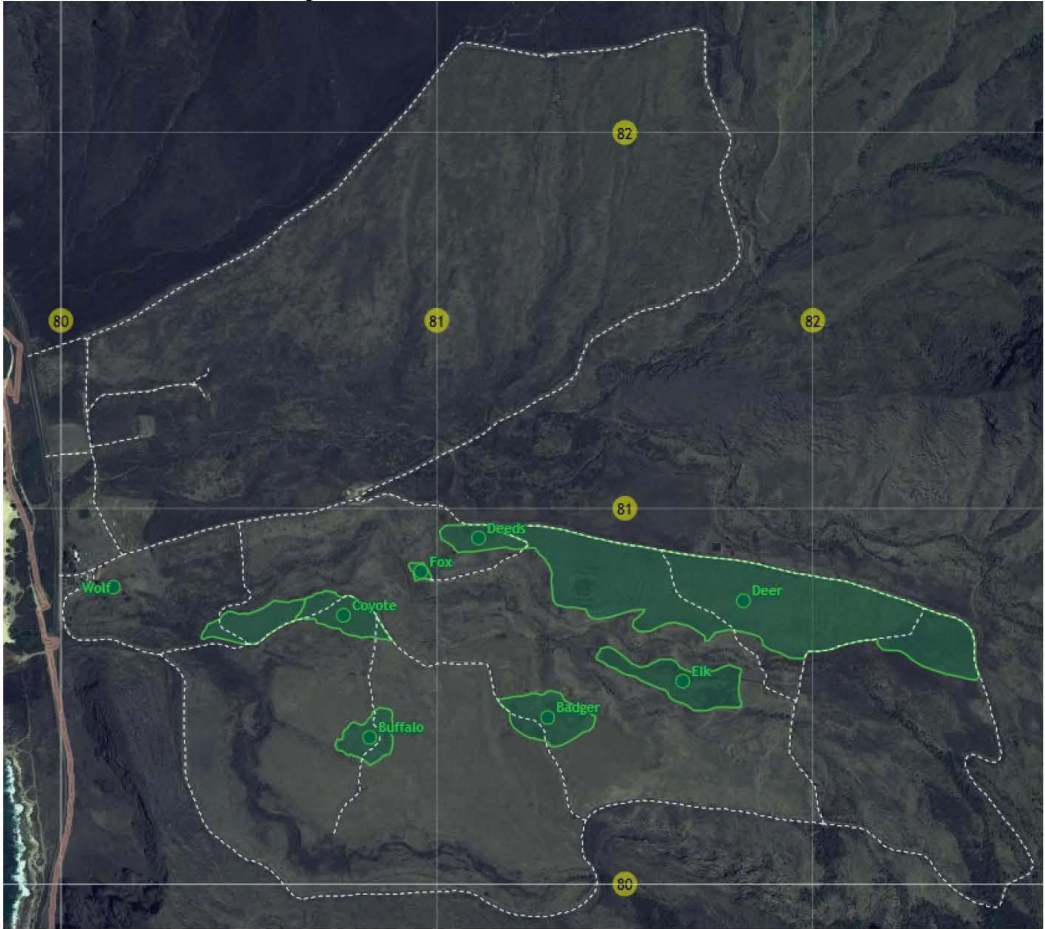
ITAM Site Identification Form

RETURN TO: LENA HITE, ITAM, BLDG 1192

OBSERVER:

PHONE NUMBER:

1. Please indicate each impediment by circling the location on the map and giving the impediment an Impediment Identification number for referencing.



2. For each impediment, please provide a description and rank the severity of the impediment with (1) erosion noted, (2) erosion interferes with training or testing and (3) erosion that causes danger to personnel or equipment.

Impediment Identification Number	Description	Severity (1, 2, 3)	8 Digit Grid or GPS (if available)

Thank you for helping sustain and maximize Army testing and training lands!

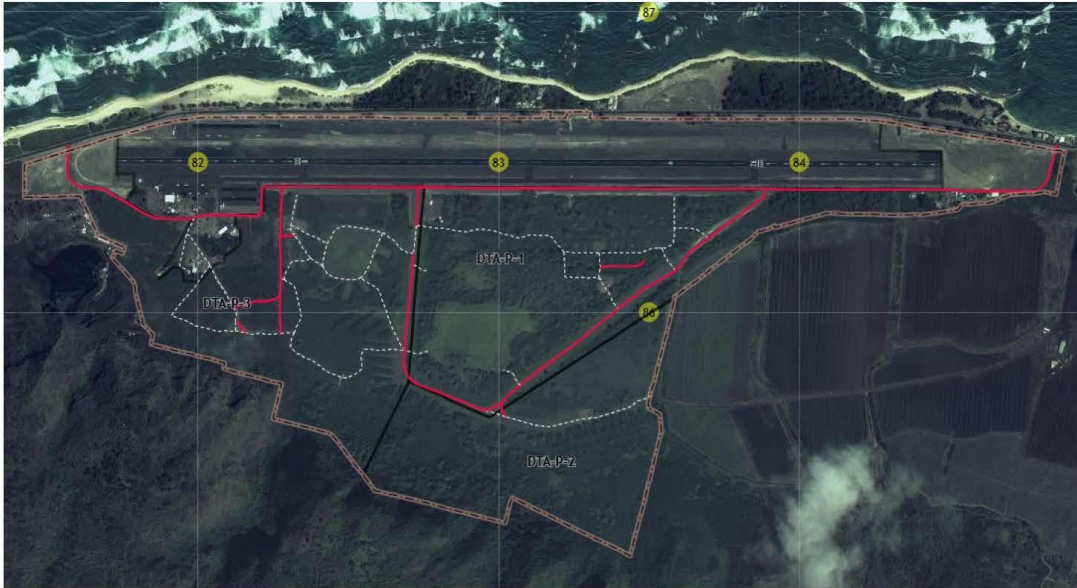
## ITAM Site Identification Form

**RETURN TO: LENA HITE, ITAM, BLDG 1192**

**OBSERVER:**

**PHONE NUMBER:**

1. Please indicate each impediment by circling the location on the map and giving the impediment an Impediment Identification number for referencing.



2. For each impediment, please provide a description and rank the severity of the impediment with (1) erosion noted, (2) erosion interferes with training or testing and (3) erosion that causes danger to personnel or equipment.

Impediment Identification Number	Description	Severity (1, 2, 3)	8 Digit Grid or GPS (if available)

**Thank you for helping sustain and maximize Army testing and training lands!**



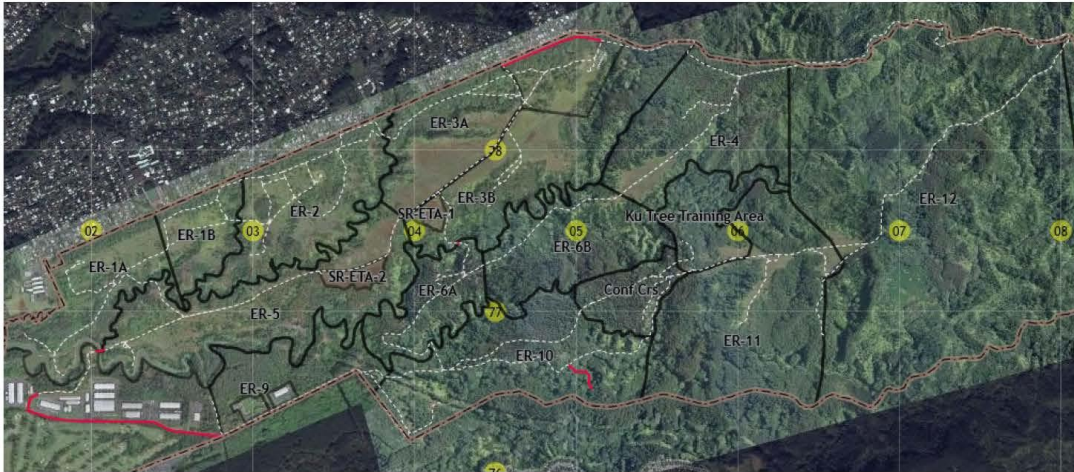
## ITAM Site Identification Form

**RETURN TO: LENA HITE, ITAM, BLDG 1192**

**OBSERVER:**

**PHONE NUMBER:**

1. Please indicate each impediment by circling the location on the map and giving the impediment an Impediment Identification number for referencing.



2. For each impediment, please provide a description and rank the severity of the impediment with (1) erosion noted, (2) erosion interferes with training or testing and (3) erosion that causes danger to personnel or equipment.

Impediment Identification Number	Description	Severity (1, 2, 3)	8 Digit Grid or GPS (if available)

**Thank you for helping sustain and maximize Army testing and training lands!**



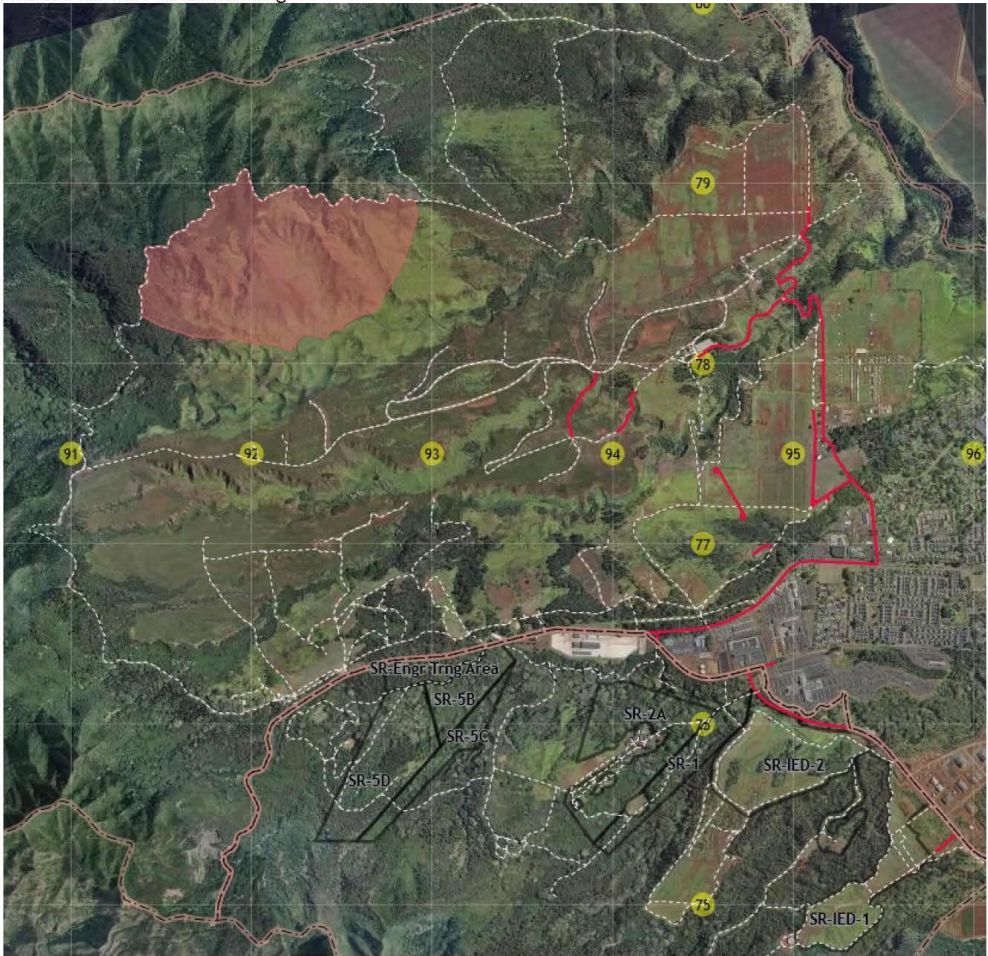
ITAM Site Identification Form

RETURN TO: LENA HITE, ITAM, BLDG 1192

OBSERVER:

PHONE NUMBER:

1. Please indicate each impediment by circling the location on the map and giving the impediment an Impediment Identification number for referencing.



2. For each impediment, please provide a description and rank the severity of the impediment with (1) erosion noted, (2) erosion interferes with training or testing and (3) erosion that causes danger to personnel or equipment.

Impediment Identification Number	Description	Severity (1, 2, 3)	8 Digit Grid or GPS (if available)

Thank you for helping sustain and maximize Army testing and training lands!

**RETURN TO: LENA HITE, ITAM, BLDG 1192**

**PHONE NUMBER:**

This aerial map displays the Klamath River watershed, which is divided into several sub-watersheds labeled as follows:

- KITA-A-1
- KITA-B-1
- KITA-B-2
- KITA-C-1
- KITA-C-2
- KITA-D-1
- KITA-D-2
- KITA-A-2
- KITA-A-3

The map also shows numerous stream segments, each identified by a yellow circular label with a number. These segments are distributed throughout the watershed, with a higher concentration along the main river channel and its tributaries. The river channel is highlighted in red, and the surrounding terrain is shown in shades of green and brown, indicating forested and developed areas respectively. A grid of latitude and longitude lines is overlaid on the map for reference.

Impediment Identification Number	Description	Severity (1, 2, 3)	8 Digit Grid or GPS (if available)

8

## **Section II: Award Information**

This Funding Opportunity Announcement is for a competed cooperative agreement. The period of performance for this requirement is twelve (12) months from the date of award, with the option for four (4) additional 12-month Option Periods subject to availability of funding. This does not obligate the Government to extend this agreement beyond the initial 12-month period of performance. The total Project Cost Ceiling for this requirement is \$1,090,614.00. Provide proposed cost information for each period of performance (Base and Option Periods). The Government will have substantive involvement throughout the execution of this requirement.

Announcement Issue Date: 03 April 2025

Application Due Date: 05 June 2025

Estimated Award Date: On or About 30 June 2025

### **Section III: Eligibility Information**

1. Eligible Applicants – Open to all that meet the criteria of this announcement. Award shall be limited to States, local governments, Indian tribes, non-governmental organizations, and individuals, pursuant to the authority of 16 U.S.C. 670c-1(a).
2. Cost Sharing – This action will be 100% funded by USACE.
3. Other Information – None noted.

## **Section IV: Application and Submission Information**

### **1. Address to Request Application Package:**

The complete Funding Opportunity Announcement, application forms, and instructions are available for download at Grants.gov. USACE is not responsible for any loss of internet connectivity or for an applicant's inability to access documents posted at the referenced website.

The administrative point of contact is the Grants Specialist, Pamela Iverson  
[pamela.iverson@usace.army.mil](mailto:pamela.iverson@usace.army.mil).

### **2. Content and Form of Application Submission:**

All mandatory forms and any applicable optional forms must be completed in accordance with the instructions on the forms and the additional instructions below.

- a. SF 424 - Application for Federal Assistance
- b. SF 424 A – Budget Information for Non-construction Programs
- c. SF 424 B – Assurances – Non-Construction Programs
- d. Program Narrative – Brief program description illustrating applicant's ability to meet the goals and objectives described in Section VI Scope of Work of this announcement.

3. Application shall be submitted **NO LATER THAN 05 JUNE 2025; 2:00 PM (Alaska Time)** via email or through Grants.gov.

### **4. Submission Instructions:**

Applications may be submitted by email or via the internet through Grants.gov. Choose ONE (1) of the following submission methods:

Via Email: Format all documents to print on Letter (8 ½ x 11") paper. E-mail proposal to the Grants Specialist, Pamela Iverson, at [pamela.iverson@usace.army.mil](mailto:pamela.iverson@usace.army.mil).

Via Grants.gov: Applicants are not required to submit proposals through Grants.gov. However, if applications are submitted via the internet, applicants are responsible for ensuring that their Grants.gov proposal submission is received in its entirety and within the date and time required. The Government bears no responsibility for data errors resulting from transmission of conversion processes associated with electronic submissions. The Government will bear no responsibility for delays in submissions due to technical difficulties at or with the Grants.gov website. All applicants choosing to use Grants.gov to submit proposals must be registered and have an account with Grants.gov. ***It may take up to three (3) weeks to complete Grants.gov registration.*** For more information on registration, go to <http://www.grants.gov/ForApplicants>.

## **Section V: Application Review Information**

### **Application Submission Evaluation Criteria and Basis of Award**

#### **Schofield Barracks Vegetation Management and Berm Maintenance Range Division Hawaii, Integrated Training Area Management Oahu, Hawaii**

April 2025

The Government will evaluate technical submissions in accordance with the criteria described herein and award a cooperative agreement to the eligible, qualified, and responsible applicant whose submission is determined to be most likely to be successful. The Government will not award a cooperative agreement to an applicant whose submission contains a deficiency.

The evaluation factors for this action are:

- Factor 1: Experience (most important technical factor)
- Factor 2: Technical Approach (2<sup>nd</sup> most important technical factor)
- Factor 3: Cost (3<sup>rd</sup> most important factor)

After listing submission strengths, weaknesses and deficiencies, the Government will assign an adjective rating of Outstanding, Good, Acceptable, Marginal, or Unacceptable to each technical factor which reflects the Government's confidence in each applicant's ability, as demonstrated in its submission, to perform the requirements stated in the Statement of Work (SOW). The adjectival ratings shall be assigned, using the following criteria, which incorporate a submission risk assessment:

<b>Adjectival Rating</b>	<b>Description</b>
Outstanding	Submission indicates an exceptional approach and understanding of the requirements and contains multiple strengths.
Good	Submission indicates a thorough approach and understanding of the requirements and contains at least one (1) strength.
Acceptable	Submission indicates an adequate approach and understanding of the requirements.
Marginal	Submission has not demonstrated an adequate approach and understanding of the requirements or contains an element of risk.
Unacceptable	Submission does not meet requirements of the solicitation and, thus, contains one (1) or more deficiencies and is unawardable.



## APPLICATION EVALUATION AND SELECTION CRITERIA

Each applicant shall be evaluated in accordance with the selection criteria below. The selection criteria are listed in descending order of importance.

### Factor 1 Experience

The applicant shall demonstrate prior project experience relevant to the attached SOW, completed within the last five (5) years of this Funding Opportunity Announcement, and other qualifications and technical competence in all of the following areas:

1. Experience supporting Department of Defense (DoD) Natural resource management programs and understanding conservation elements necessary to monitor, manage, protect, and conserve training areas and range facilities for optimal management of public lands under military control. Applicant(s) may receive greater consideration for previous experience partnering with the **Government** in an aforementioned capacity.
2. Experience with management/treatment of vegetation control/modification, erosion control/soil stabilization, fuel breaks, forest management, seeding/re-vegetation, fertilization, berm management, and trail maintenance on military lands.
3. Experience maintaining quality training lands by repairing training areas and sites that have been damaged and provide improved soldier training environments for continued mission use.
4. Experience improving water quality and short- and long-term effectiveness of land use for military training purposes.
5. Experience planning and managing time critical work, performing studies, projects, or plans in accordance with applicable guidance and regulations.

The applicant shall provide examples of up to four (4) past projects of similar size, scope, and complexity that best demonstrate the above qualifications. Submit projects that are at least 50% complete or were completed within the past five (5) years. The example project summaries shall be limited to one (1) page each. The example project summaries shall identify:

- Title/Subject
- Location
- Duration
- Brief description
- Roles and work self-performed
- Date project began and if completed
- Complexities or key accomplishments
- Client contact information

The Government will utilize the example project summaries to evaluate the capability and experience as a basis for comparing applicants to determine the applicant most likely to be successful in delivering results.

## **Factor 2      Technical Approach**

The applicant shall provide a brief narrative of their technical approach and a milestone schedule. The narrative shall be no more than two (2) pages per main task and must include:

- A discussion of the technical approach to accomplish the SOW requirements.
- A discussion of the quality assurance, quality control, and other technical activities that will be implemented to ensure that quality data are collected to support project data quality objectives.
- A discussion of applicable regulatory requirements and how project requirements will be implemented.
- A discussion of all assumptions. The inclusion of numerous assumptions that significantly “assume away” applicant risk regarding major issues or problems that may be encountered on the project will be considered unacceptable.

The applicant shall also provide an organizational chart with the proposed project team with defined roles, responsibilities, and lines of communication for all key personnel and sub-recipients. The Government will review, evaluate, and compare the technical approach documentation received from each applicant to determine the applicant most likely to be successful in delivering results.

## **Factor 3      Cost**

Provide proposed cost to the Government during the Period of Performance, to include Optional Periods of Performance, as this data must be reviewed and evaluated to aid in determining fairness and reasonableness. In accordance with Title 2 of the Code of Federal Regulations, non-Federal entities may not earn or keep any profit (or comparable fees) resulting from Federal Financial Assistance actions. Therefore, any applications that contain profit and/or fees will be excluded from consideration because the government cannot compensate for profit or fees on Federal Financial Assistance awards (i.e., Grants and Cooperative Agreements).

Allowable costs incurred by States, local governments, Indian tribes, non-governmental organizations, and individuals are determined in accordance with the provision of Cost Principles of 2 CFR 200 and negotiated indirect rates. OMB’s cost principles are contained in 2 CFR 200.400-.475 et seq.

Cost is considered less important than non-cost factors and will be evaluated for fairness and reasonableness, per OMB cost principles. If more than one (1) application is rated as having equal non-cost factors, the lowest cost budget of the applications received would be granted as the preferred budget unless there are extraordinary reasons for not doing so.



**Section VI: Award Administration Information**

Reserved.

**Section VII: Agency Contacts**

Reserved.

**Section VIII: Other Information**

Reserved.

All questions or inquiries regarding this Funding Opportunity Announcement shall be directed to the agency contact(s) noted in Section IV.